



Overlake Terrace

*Nestled amongst
the tall evergreens
of Redmond...*

Overlake Terrace takes advantage of its suburban surroundings. Our accessible yet scenic location makes our community a wonderful place to call home.

Overlake Terrace



INDEPENDENT • ASSISTED LIVING • MEMORY CARE



community features:

- Beautifully landscaped gardens & courtyards
- Meals prepared by on-site chef
- Elegant restaurant-style dining
- Beautifully appointed private dining room
- 24-hour staffing
- Wellness programs
- Life Enrichment programs
- Theatre with surround sound
- Complimentary laundry facilities
- Scheduled transportation
- Full-service beauty salon
- Fitness center
- Café

apartment amenities:

- Private mailboxes
- Emergency response system
- Plush wall-to-wall carpeting *(in select suites)*
- Hardwood floors *(in select suites)*
- Designer-selected draperies and/or vertical blinds
- Kitchenette *(in select suites)*
- Convenient safety support bars in bathroom
- Closet and storage space
- Smoke alarm
- All utilities *(except telephone and cable)*
- Apartment home maintenance
- Weekly housekeeping and laundry



Overlake Terrace

INDEPENDENT • ASSISTED LIVING • MEMORY CARE

2956 152nd Avenue NE • Redmond, Washington 98052

☎ 425.883.0495 • 📠 425.881.5118

www.overlaketerrace.com





Overlake Terrace is dedicated to the belief that mature adults deserve to live in a caring community where their personal preferences for daily living are recognized and provided. Our mission is to be the premier provider of Independent, Assisted Living and Memory Care by always striving to preserve our residents' choice, dignity, privacy and independence. Our community is designed to meet the needs of seniors, including those with Alzheimer's disease or other forms of dementia. We offer superior programs at a competitive price.



Ask about our *Personal Preferences* approach to individualized service. We recognize it is the resident's right to choose how to live each day in our community.

Independent

Overlake Terrace is a premier senior retirement community providing full-service retirement living without requiring a long-term lease commitment. Residents enjoy our elegant dining room which is open for breakfast, dinner and supper and features gracious dining and unique international cuisine prepared by our on-site chef and his culinary staff. Transportation is provided for special group events as well as individual appointments to doctor and dental offices in the area.

Assisted Living

Our residents enjoy a lifestyle of choice. This means many things, from our wide range of activities to meal choices. It also means that we are trained to provide a balanced approach to when and where a resident needs assistance. We strive to respect and preserve their independence and sense of freedom, while being sensitive to when intervention and assistance is warranted. At Overlake Terrace, we practice Resident Centered Care. Whenever and however possible, we will tailor services, care and activities to each individual resident.

Kingswood Court Memory Care

Kingswood Court is a specialized Memory Care community that provides quality care to our residents who face Alzheimer's disease or other related dementias. Our uniquely designed neighborhood promotes safety, security, well-being, and life enrichment programs. Highlights of our Memory Care include specialized caregiver training and activities, our spacious outside courtyard and the interaction between Kingswood Court and our Assisted Living neighborhoods. Kingswood Court apartment rates start at \$4,000 per month.

Respite and Adult Day Care

Our programs allow the caregiver time away from the heavy demands placed on them when caring for another and are a great way to experience our Overlake Terrace lifestyle. Respite rates range from \$125 to \$175 a day, depending on how much care is required. We typically require a one-week minimum stay, though shorter stays can be considered on a case-by-case basis.

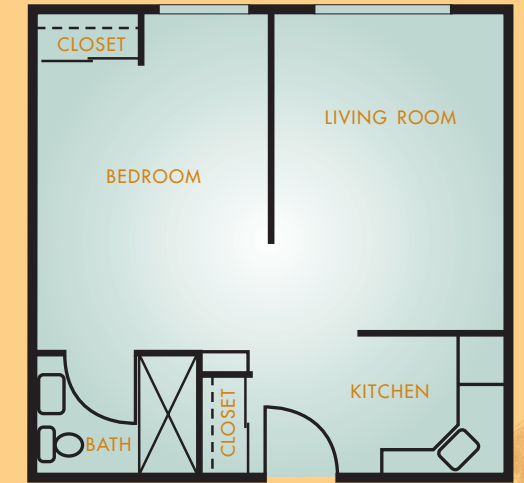
FLOOR PLANS

[SQUARE FOOTAGE IS APPROXIMATE]

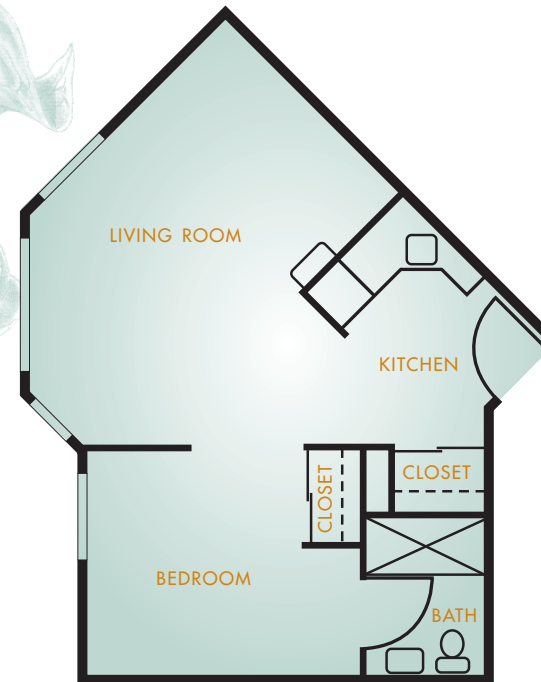


STUDIO • 330 SQUARE FEET
FROM \$2730

ONE BEDROOM • 415 SQUARE FEET
FROM \$3150



TWO BEDROOM • 575 SQUARE FEET
FROM \$4250



DELUXE ONE BEDROOM • 500 SQUARE FEET
FROM \$3570